



Total Solution Provider in Saw Device

SL06219CT

62.5 MHz IF SAW Filter
19.62 MHz Bandwidth
Revision 0: 22. March. 2008



-
- Electrical Characteristics
 - Package Dimensions
 - Testing Environment
 - Frequency Characteristics
-

SAWNICS Inc.

460 Cheonheung-ri, Seonggeo-eup, Cheonan-si, Chungcheongnam-do, 330-836 / Korea.
Tel: +82 41 550 9372 / Fax: +82 41 550 9399 / www.sawnics.com

□ Electrical Characteristics

Maximum Ratings

Parameters Description	Unit	Minimum	Typical	Maximum
Operating Temperature Range	°C	-30	-	60
Storage Temperature Range	°C	-40	-	85
Maximum DC Voltage	V	-	-	10
Maximum Input Power	dBm	-	-	10
Source Impedance (single ended) ⁽¹⁾	Ω	-	50	-
Load Impedance (single ended) ⁽¹⁾	Ω	-	50	-
Package type & size	T			
Length x Width	mm ²	-	9.1 x 4.8	-
Height	mm	-	-	1.5

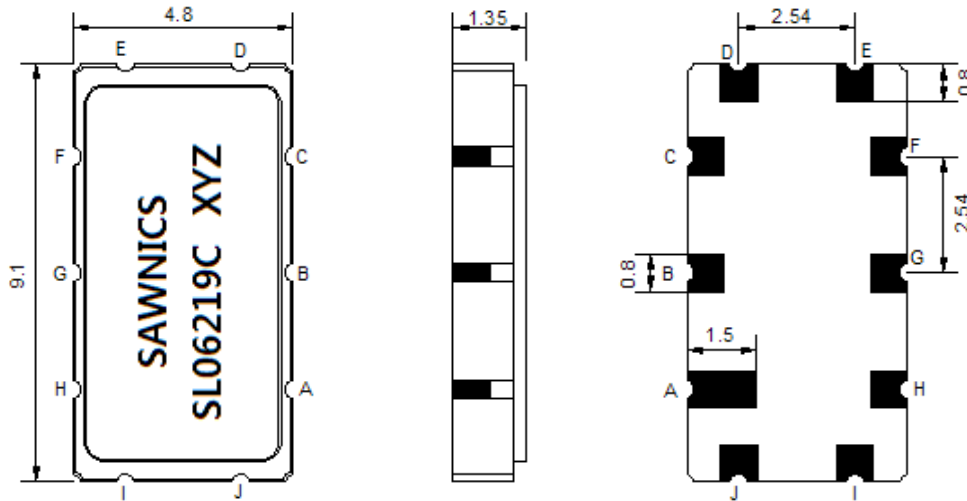
Electrical Specification

Parameters Description	Unit	Minimum	Typical	Maximum
Center Frequency (Fo)	MHz	-	62.5	-
Insertion Loss at Fo	dB	-	20.50	22.0
Group Delay Variation at Fo±9.22MHz	nsec	-	30	80
Absolute Delay at Fo	usec	-	1.01	-
Passband Ripple at Fo±9.22MHz	dB	-	0.50	1.0
Bandwidth at -1dB	MHz	19.50	19.62	-
Bandwidth at -3dB	MHz	-	20.44	-
Bandwidth at -5dB	MHz	-	20.94	-
Bandwidth at -40dB	MHz	-	25.20	25.80
Relative Attenuation:				
Lower sidelobe	dB	40	45	-
Upper sidelobe	dB	40	45	-

Notes : (1) With Matching Network (Ref. Testing Environment Circuit as shown below).

Those impedances could be modified with different impedance values and/or structures, if necessary.

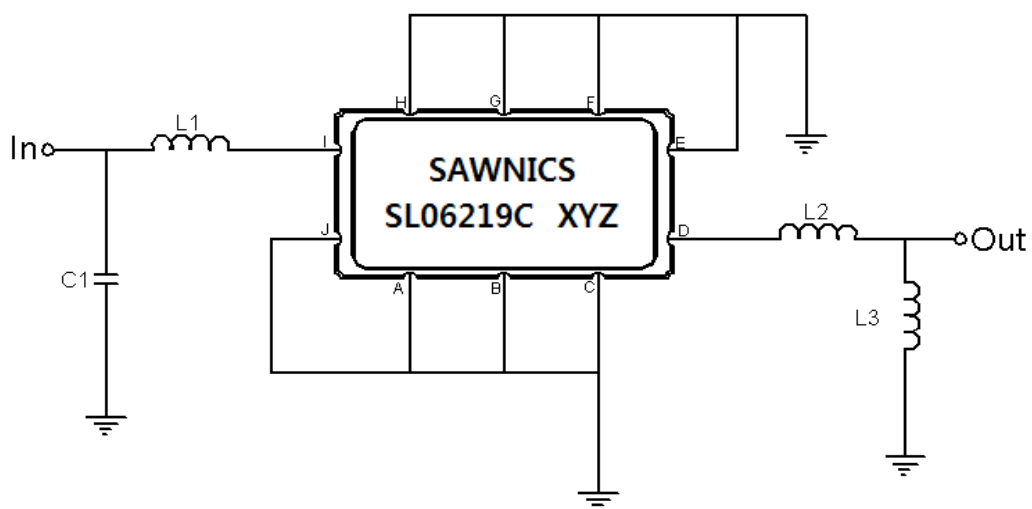
Package Dimensions



- ① SAWNICS: Brand
- ② SL06219C: Model Name
- ③ X : Date Code (Year)
- ④ Y : Date Code (Month)
- ⑤ Z : Date Code (Date)
- : Index Dot

Pin Description	
A, B, C, E, F, G, H, J	Ground
I	Input
D	Output

Testing Environment

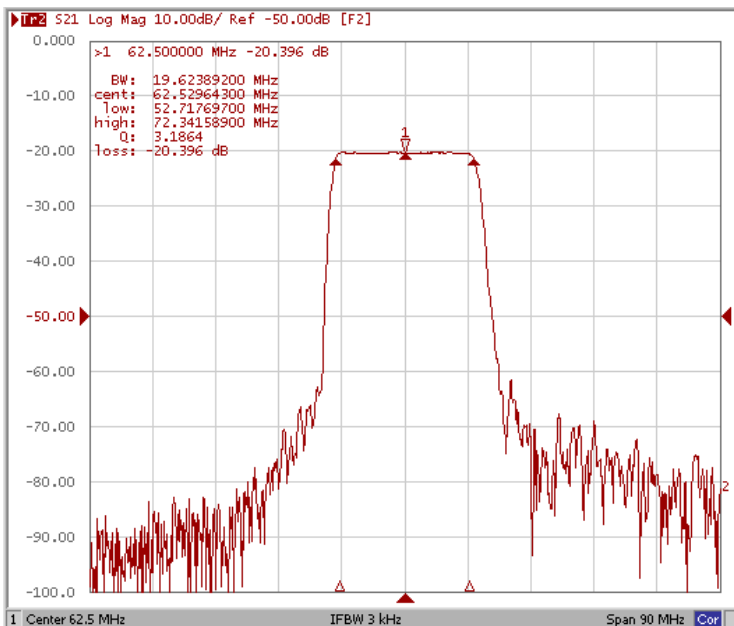


Test Fixture & Values	
Input	L1 = 180 nH, C1 = 33 pF
Output	L2 = 39 nH, C2 = 68 pF
Source/Load Impedance	50 Ω

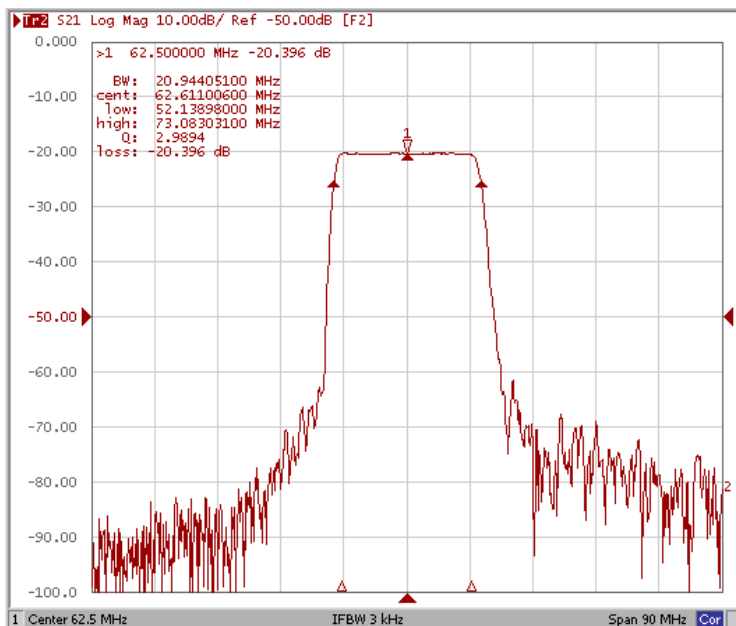
□ Frequency Characteristics

Frequency Response

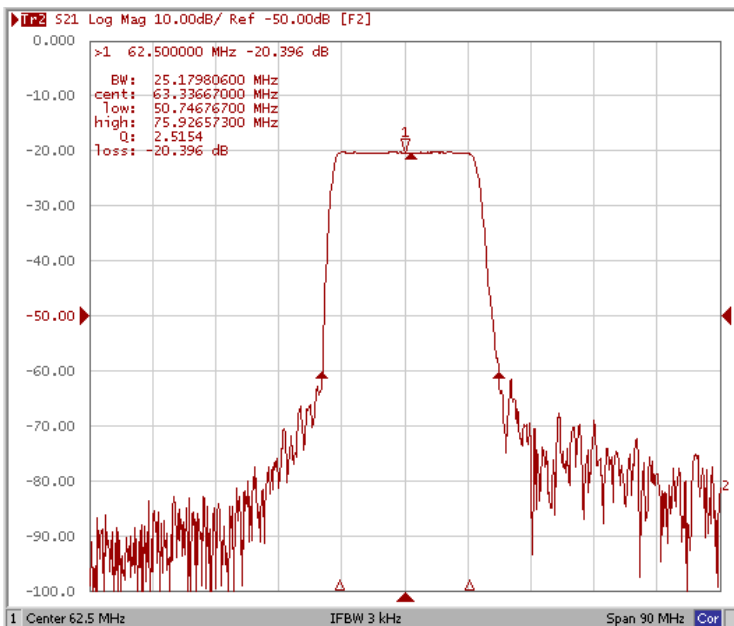
Bandwidth at -1.0 dB



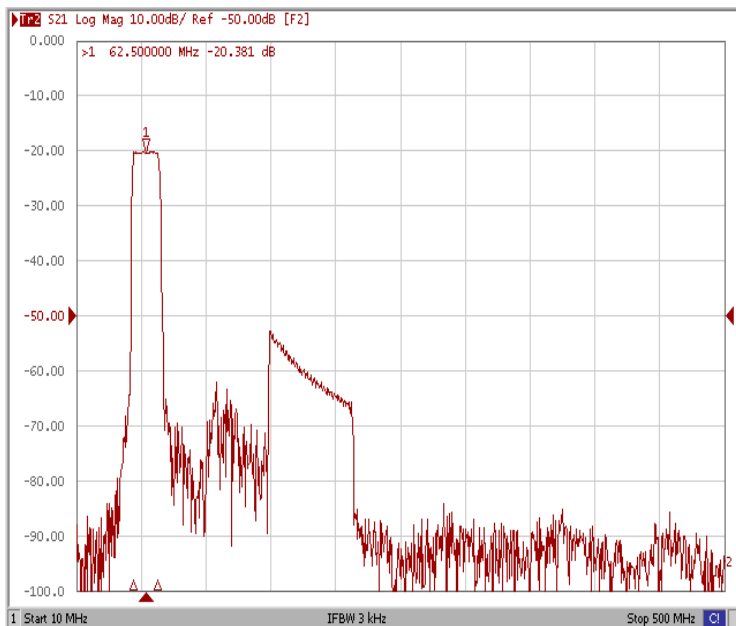
Bandwidth at -5.0 dB



Bandwidth at -40.0 dB



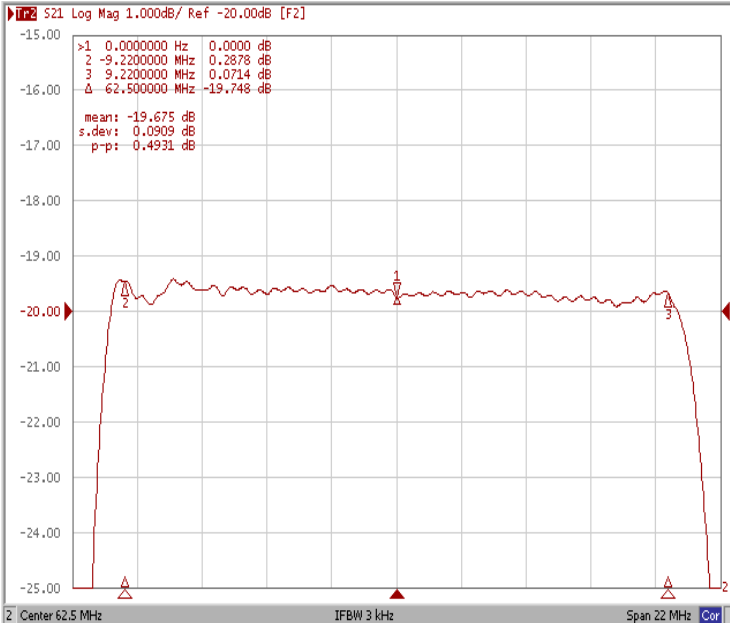
Wide-Band



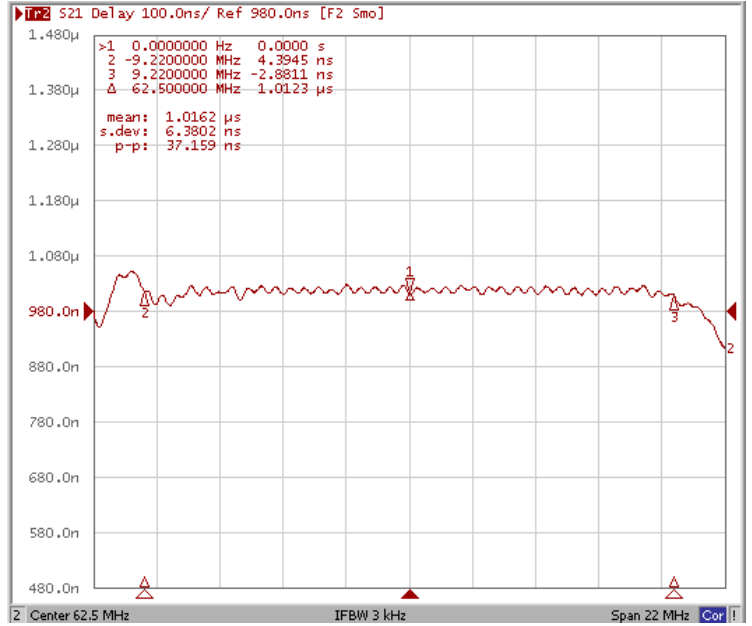
Frequency Characteristics

Frequency Response

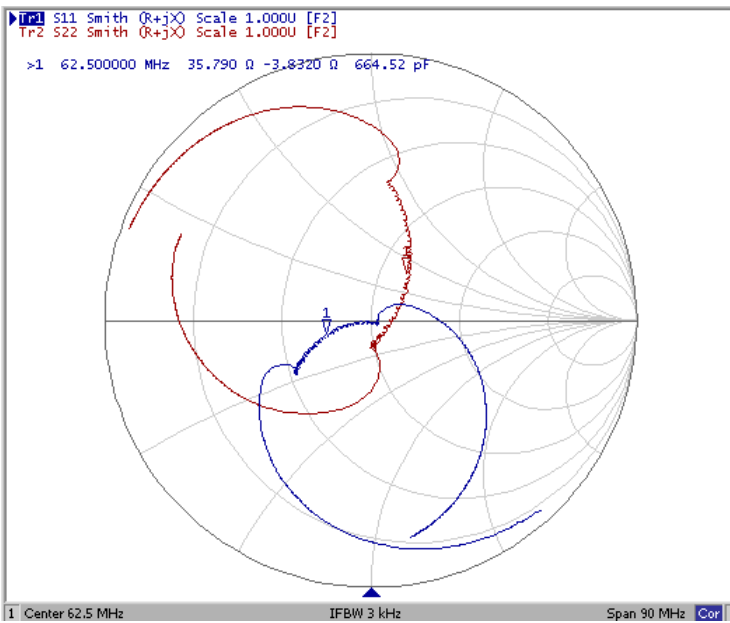
Ripple Variation at Fo ±9.22MHz



Group Delay Variation at Fo ±9.22MHz



Smith Chart



SWR

